

Hillyard Cleaning Companion® C2® Features and Specifications

Tool slots and open storage area keep accessories well organized and ready to work.

Built-in battery charger with cord wrap.

Unteathered Run-Time

Cleaning Companion pumps will run about 30 seconds per fixture to clean an entire restroom, including fixtures, floors, partitions, walls.

That's enough battery power to clean 72 sets of restrooms with 2 sinks and 3 toilets without a recharge.

Front-mounted wrap for supply hose.

Chemical selector knob with lighted on/off switch.

Strain-free supply hose connection.

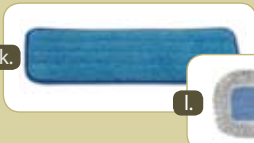
Capacity for 3 product refills (Draw from 2, 1 spare). Each refill has a built-in, sealed, maintenance-free dilution control tip. Large rear-mount fill port.

Large, heavy-duty no mark casters.



Screw into receiver threads on multi-purpose brush or other standard threaded device. Other end snaps into the Smart-lok Extension Pole.

Smooth barrel slides into 18" flat mop frame collar. Tighten collar. Other end snaps into the Smart-lok Extension Pole.



Remote fill hose couples with most restroom faucets.



C2 Accessories

Included w/C2 Optional

Description	Pack	Item No.
a1. Adjustable Handle (C2 comes with 2 handles)	1	HIL30316
a2. Smart-lok® Adjustable Handle	1	MLA7706
b. Smart-lok® Threaded Adapter	1	MLASP0030
c. Smart-lok® Smooth Adapter	1	HIL30350
d. Super Dry Squeegee, Double Moss, 14"	1	HIL30333
e. Super Dry Squeegee, Double Moss, 18"	1	HIL30340
f. Super Dry Squeegee, Double Moss, 24"	1	HIL30341
g. Multi-purpose Brush w/ Squeegee	1	CSM3619014
h. Multi-purpose Brush w/o Squeegee	1	CSM3619714
i. Brush Bushing For Multi-purpose Brush & Smart-lok® Thread Adapter	1	HIL30851
j. 18" Flat Mop Frame	12	HIL52832
k. 18" Microfiber Pad	12	RUBQ410BL
l. 18" High Absorbency Microfiber Pad	6	RUBQ416BL
m. Cleaning Process Card (not pictured)	1	LIT90085896
n. 72" Remote Fill Hose	1	UNGWH180
o. 12" Window Squeegee	1	UNGPR300
p. Microfiber Cloth, 16"x16", Blue, Glass/Mirror	12	RUBQ630BL
q. Microfiber Cloth, 16"x16", Yellow	12	RUBQ610YW
r. Microfiber Cloth, 16"x16", Green	12	RUBQ620GR
s. Microfiber Cloth, 16"x16", Red	12	RUBQ620RD

Specifications

Item Number	HIL99230
Dimensions	22"W x 28"D x 38"T - Footprint
Dry Weight	75 Lbs
Supply Hose Length	12 Ft
Fresh Water Capacity	14 U.S. Gallons
Wand Pressure	125 psi
Pump Size, Flow Rate	Max rated: 1.5 gpm, 150 psi, ½ gpm
Battery	Sealed, Maintenance-free. 3 Hrs Continuous Pump Run-time

HILLYARD

© 2008, Hillyard, Inc.

Visit www.cleanbetter.com
for more information and
to view videos!

Hillyard Cleaning Companion® C3® Features and Specifications



Push-button bottle fill chemical management with built-in drip tray.

Built-in battery charger with illuminated plug.



Easy fill large-mouth fill port is set at a convenient height.

Molded-in water gauge.

Locking front caster.



Tool slots and open storage area keep cleaning accessories well organized and ready for work.

Front-mounted wrap for supply hose.

Side molded-in hooks for wet-floor sign storage.

Chemical selector knob with lighted on/off switch.

Capacity for 3 product refills. Each refill has a built-in, sealed, maintenance-free dilution control tip. Security locking mechanism available.

Strain-free supply hose connection.

Large, heavy-duty mark-free casters.

Untethered Run-Time

Cleaning Companion pumps will run about 30 seconds per fixture to clean an entire restroom, including fixtures, floors, partitions, walls.

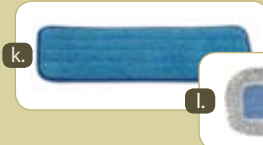
That's enough battery power to clean 72 sets of restrooms with 2 sinks and 3 toilets without a recharge.



Screw into receiver threads on multi-purpose brush or other standard threaded device. Other end snaps into the Smart-lok Extension Pole.



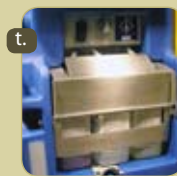
Smooth barrel slides into 18" flat mop frame collar. Tighten collar. Other end snaps into the Smart-lok Extension Pole.



Remote fill hose couples with most restroom faucets.



Customer supplies lock for cover.



C3 Accessories

Included w/C3 Optional

Description	Pack	Item No.	Daily Kit HIL30848
a. Smart-lok® Adjustable Handle	1	MLA7706	
b. Smart-lok® Threaded Adapter	1	MLASP0030	●
c. Smart-lok® Smooth Adapter	1	HIL30350	●
d. Super Dry Squeegee, Double Moss, 14"	1	HIL30333	
e. Super Dry Squeegee, Double Moss, 18"	1	HIL30340	
f. Super Dry Squeegee, Double Moss, 24"	1	HIL30341	
g. Multi-purpose Brush w/ Squeegee	1	CSM3619014	●
h. Multi-purpose Brush w/o Squeegee	1	CSM3619714	
i. Brush Bushing For Multi-purpose Brush & Smart-lok® Thread Adapter	1	HIL30851	●
j. 18" Flat Mop Frame	12	HIL52832	1 inc.
k. 18" Microfiber Pad	12	RUBQ410BL	3 inc.
l. 18" High Absorbency Microfiber Pad	6	RUBQ416BL	
m. Cleaning Process Card (not pictured)	1	LIT90085896	
n. 72" Remote Fill Hose	1	UNGWH180	
o. 12" Window Squeegee	1	UNGPR300	●
p. Microfiber Cloth, 16"x16", Blue, Glass/Mirror	12	RUBQ630BL	
q. Microfiber Cloth, 16"x16", Yellow	12	RUBQ610YW	
r. Microfiber Cloth, 16"x16", Green	12	RUBQ620GR	
s. Microfiber Cloth, 16"x16", Red	12	RUBQ620RD	
t. Locking Security Cover, Stainless	1	HIL30857	

Specifications

Item Number	HIL99232
Dimensions	18"W x 18.375"D x 42"T - Footprint (21" wide at molded-in extension pole holder)
Dry Weight	55 Lbs
Supply Hose Length	15 Ft
Fresh Water Capacity	7.5 U.S. Gallons
Wand Pressure	125 psi
Pump Size, Flow Rate	Max rated: 1.5 gpm, 150 psi, ½ gpm
Battery	Sealed, Maintenance-free. 3 Hrs Continuous Pump Run-time

Visit www.cleanbetter.com for more information and to view videos!

HILLYARD

© 2008, Hillyard, Inc.



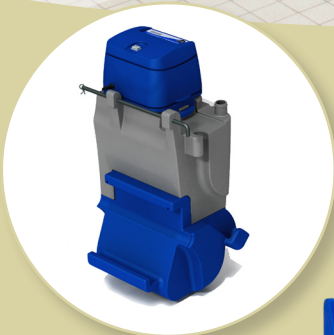
Housekeeping cart sold separately.

Features, accessories, and specifications subject to change without notice.

Hillyard Touch-Free Cleaning
- With An Add-On Recovery System!

The optional vacuum recovery system that's so easy to use and so easy to attach. It will work on your existing Hillyard C3®, or add it to a new C3 Cleaning Companion!

It's the best of both worlds, squeegee and microfiber, or vac recovery, all in one unit.



C3 Recovery Unit Specifications

Item Number	HIL99234
Recovery Capacity	5 U.S. Gallons
CFM	100
Amps	6
Included Accessories	2-Piece Wand, 10 ft Hose Recoils To 2 Ft Floor Tool, Drain Hose, 30 Ft Extension cord



Product Selection		Dilution	Fragrance	Frequency of Use
SUPROX® - HIL0070422 <ul style="list-style-type: none"> 8% concentrate hydrogen peroxide base All-around cleaner & deodorize, brightens & maintains grout 			5 oz. Citrus	<ul style="list-style-type: none"> Use daily as a stand alone cleaning option. When a disinfectant/cleaner is used daily, Suprox can be used weekly to deep clean and assist with grout maintenance.
MARINER® - HIL0070222 <ul style="list-style-type: none"> Powerful blend of citric and phosphoric acids Strong restroom cleaner removes stubborn mineral deposits and soap film 			5 oz. Floral	<ul style="list-style-type: none"> Use daily as a stand alone cleaning option When a disinfectant/cleaner is used daily, Mariner can be used weekly to deep clean and assist with mineral deposit and heavy soap film removal.
SHOWER ROOM CLEANER - HIL0070722 <ul style="list-style-type: none"> Cleaner AND disinfectant Blend of phosphoric and oxalic acid, removes mineral deposits and soap film 			4 oz. Mint	<ul style="list-style-type: none"> Use daily as a stand alone cleaning option. Can use Mariner or Suprox monthly for "deep cleaning" based on traffic load.
RE-JUV-NAL® - HIL0070522 <ul style="list-style-type: none"> Cleaner AND disinfectant, Neutral pH won't harm floor finish 			2 oz. Floral	<ul style="list-style-type: none"> Use daily as part of a cleaning program that uses Suprox or Mariner weekly.
NON-ACID RESTROOM DISINFECTANT/CLEANER - HIL0070322 <ul style="list-style-type: none"> Cleaner AND disinfectant, Neutral pH won't harm floor finish 			2 oz. Fresh	<ul style="list-style-type: none"> Use daily as part of a cleaning program that uses Suprox or Mariner weekly.
SM-1® DEGREASER - HIL0071022 <ul style="list-style-type: none"> Concentrated, non-butyl degreaser, NSF rated, category A1, A4 			5 oz. Mild	<ul style="list-style-type: none"> Use daily for cleaning and other tough degreasing needs.
CARPET PRE-SPRAY & EXTRACTION CLEANER - HIL0070022 <ul style="list-style-type: none"> Penetrates to loosen oil and water based soils Safe on 5th Gen. & Stain Resistant fibers Carpet & Rug Institute approved (CRI) 			6 oz. Mild	<ul style="list-style-type: none"> Use as needed for pre-spraying carpet.
WINDO-CLEAN+® - HIL0070922 <ul style="list-style-type: none"> Ammonia-free glass and surface cleaner 			6 oz. Mild	<ul style="list-style-type: none"> Use as needed for window and mirror cleaning.
GREEN SELECT® BATHROOM CLEANER - HIL0070822 <ul style="list-style-type: none"> Glycolic acid formulation to remove soap film and hard water Strong restroom cleaner removes stubborn mineral deposits and soap film 			6 oz. Floral	<ul style="list-style-type: none"> Use daily as a stand alone cleaning option. When a disinfectant/cleaner is used daily, Green Select Bathroom Cleaner can be used weekly to clean and assist with mineral deposit and heavy soap film removal.
TOP CLEAN - HIL0070622 <ul style="list-style-type: none"> Neutral floor cleaner 			2 oz. Fresh	<ul style="list-style-type: none"> Use as needed for floor cleaning.

HILLYARD

© 2008, Hillyard, Inc.

Hillyard C Series refills have been specifically designed to perform in the C2 and C3 Cleaning Companions. Each refill contains a valve that matches the requirements of the C2/C3, battery-powered pump system, insuring accurate dilution rates and high performance. All refills come packed in convenient 1/2 gallon containers, 6 per case.